

# 1021-1023 38TH STREET

BETWEEN 10TH AVENUE AND FORT HAMILTON PARKWAY

## Have Your Own Facility: Brand New Medical Building in Brooklyn



### Build It Your Way! 7-Floor Complex | Approximately 40,000 Square Feet

- Brand new medical rooms, labs, reception areas, waiting rooms
- Excellent location
- 44-vehicle parking lot on 2nd floor
- Conveniently situated steps away from **D**, **N** train lines and **B35** bus
- Other facilities nearby: Maimonides Medical Center, EZRA Medical Center, NYU Lutherine Family Health Center, NYU Langone Hospital, Lutherine Medical Center, Saba Medical Center and more...

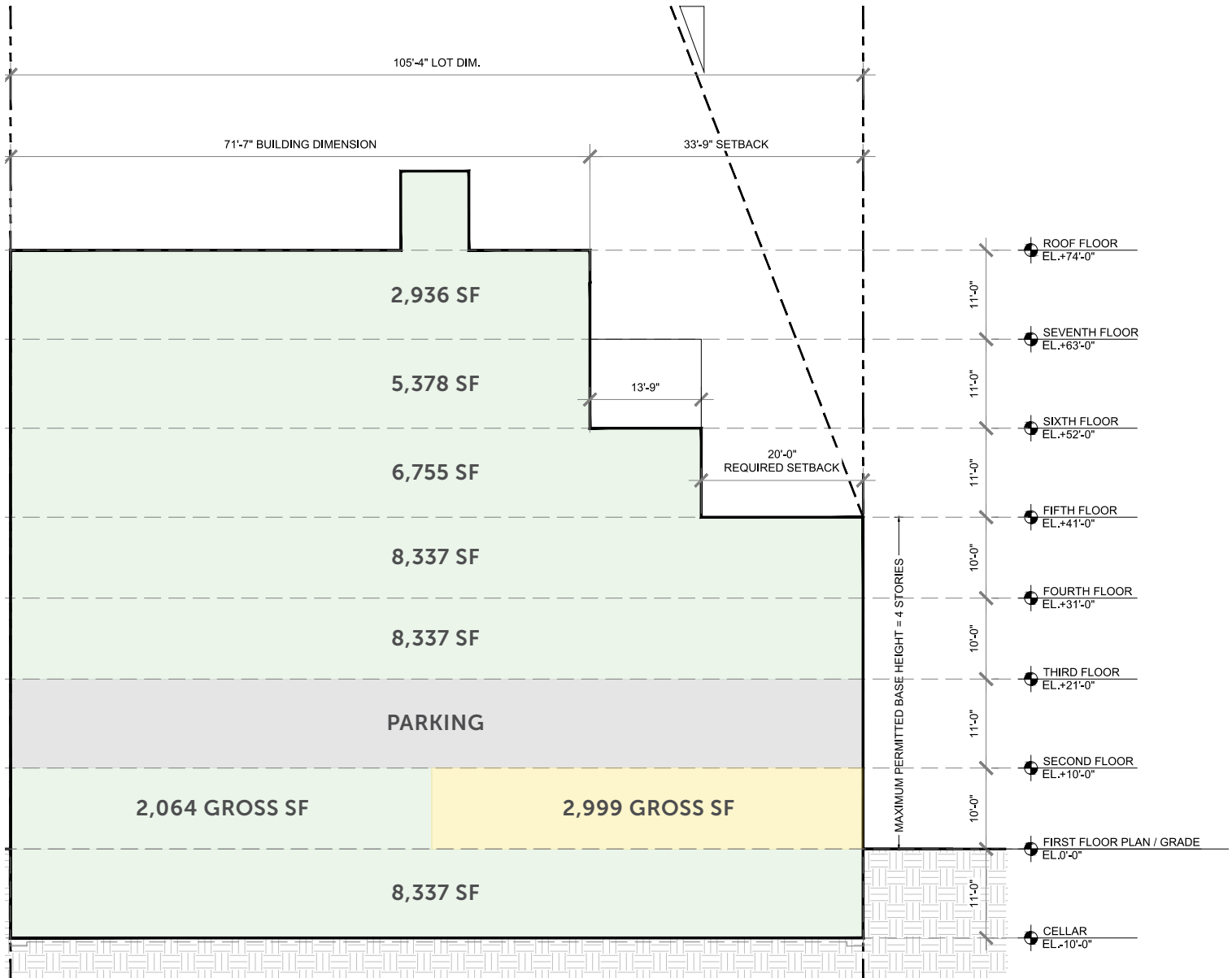
For more information, please contact exclusive agent:

Bobrow  
Bobrow  
Bobrow  
Bobrow

**Michael Nazarian**  
(212) 682-8771  
[mnazarian@normanbobrow.com](mailto:mnazarian@normanbobrow.com)

NORMAN BOBROW & CO. INC. 488 MADISON AVENUE 19TH FLOOR NEW YORK, NY 10022

# 1021-1023 38TH STREET



For more information, please contact exclusive agent:

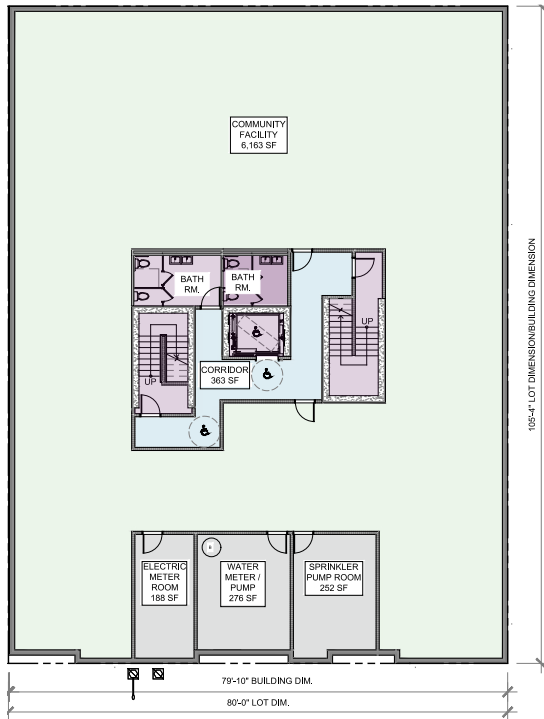
Bobrow  
Bobrow  
Bobrow

**Michael Nazarian**  
(212) 682-8771  
[mnazarian@normanbobrow.com](mailto:mnazarian@normanbobrow.com)

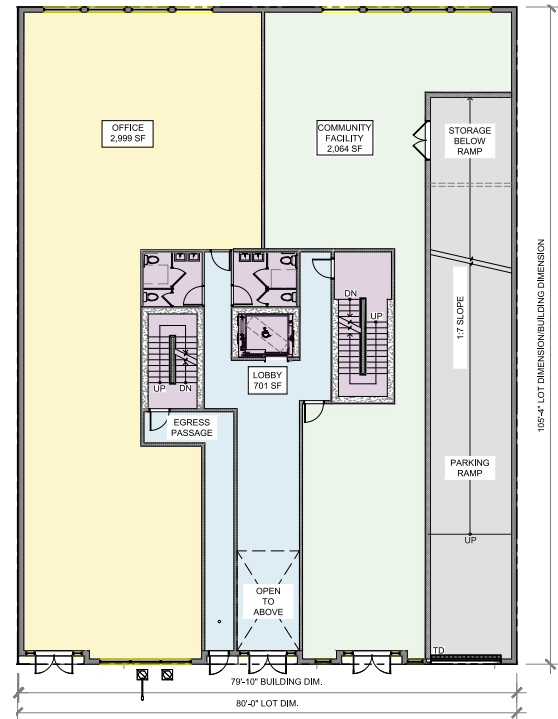
NORMAN BOBROW & CO. INC. 488 MADISON AVENUE 19TH FLOOR NEW YORK, NY 10022

# 1021-1023 38TH STREET

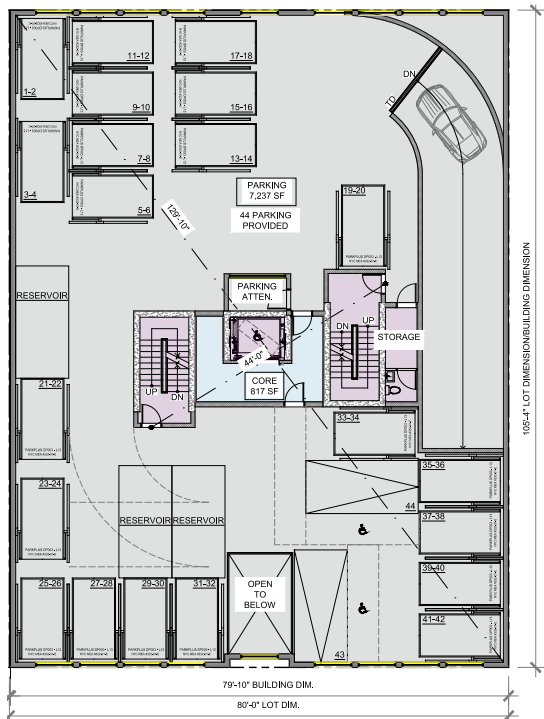
## CELLAR FLOOR



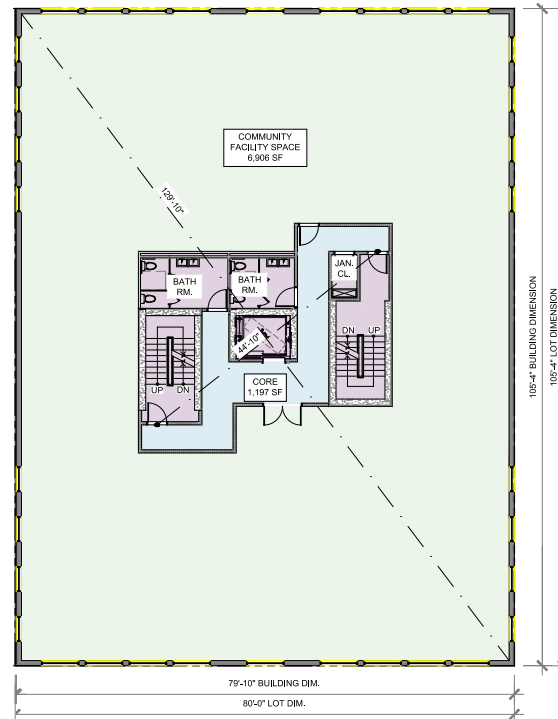
## GROUND FLOOR



## PARKING LOT (2ND FLOOR)



## 3RD & 4TH FLOORS



For more information, please contact exclusive agent:

Bobrow  
Bobrow  
Bobrow

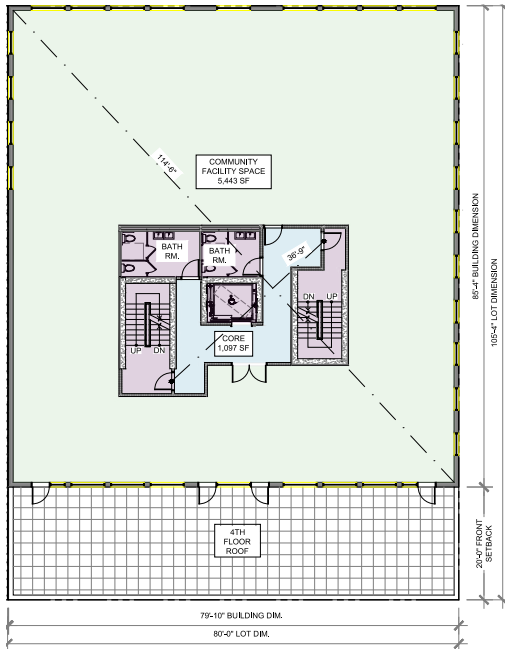
**Michael Nazarian**  
(212) 682-8771  
[mnazarian@normanbobrow.com](mailto:mnazarian@normanbobrow.com)

NORMAN BOBROW & CO. INC. 488 MADISON AVENUE 19TH FLOOR NEW YORK, NY 10022

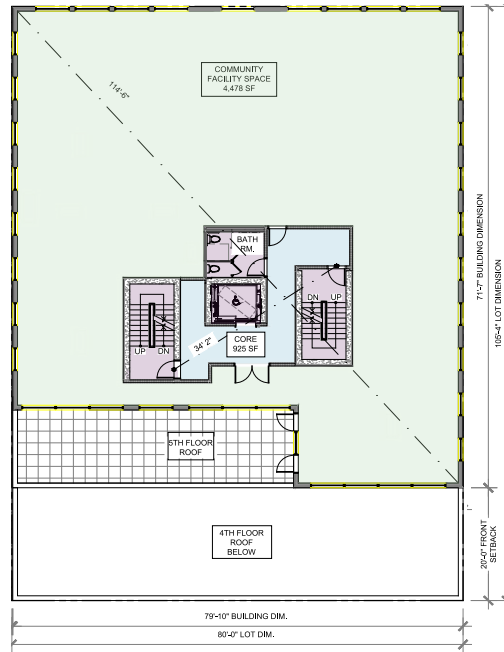


# 1021-1023 38TH STREET

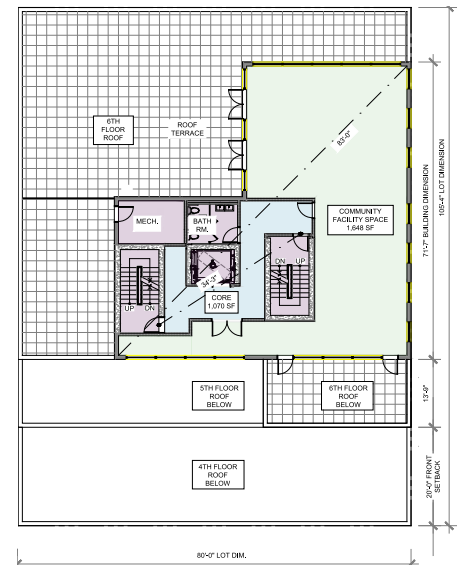
5TH FLOOR



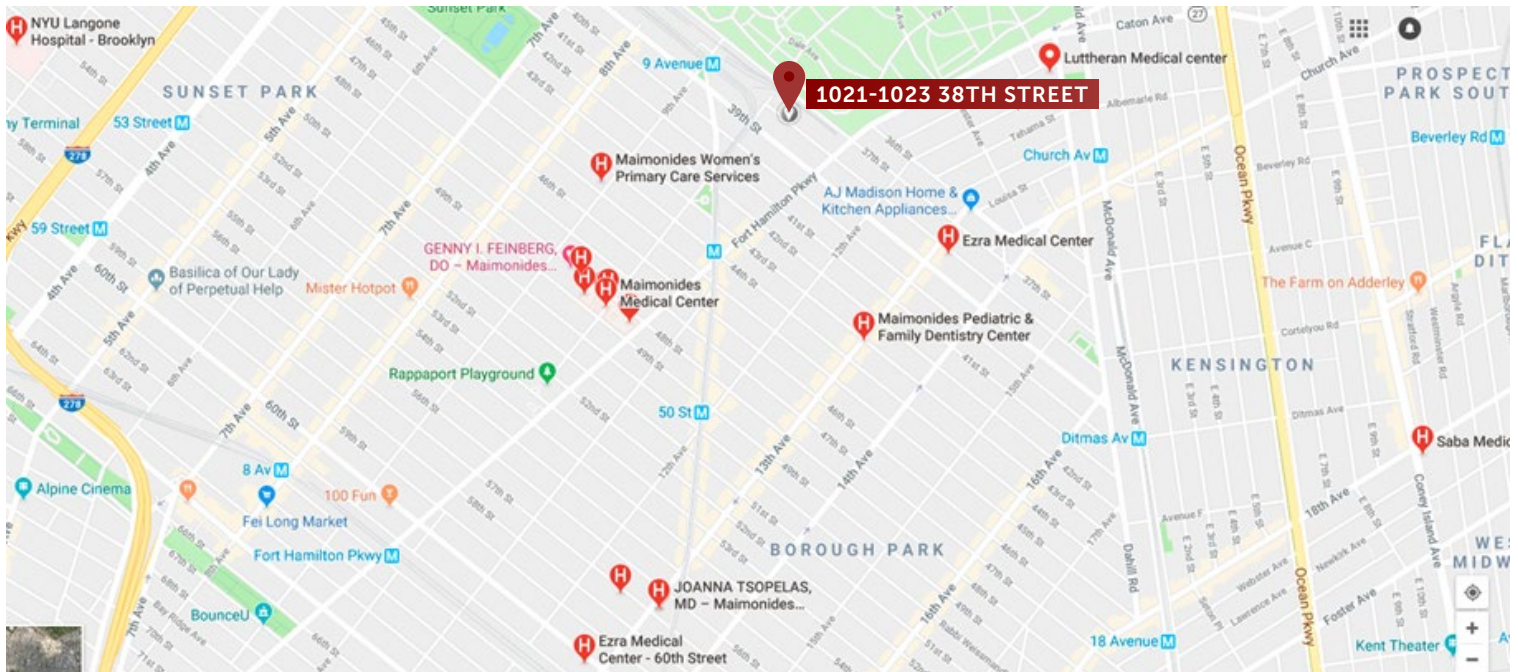
6TH FLOOR



7TH FLOOR



## Other Medical Facilities in the Area



For more information, please contact exclusive agent:

Bobrow  
Bobrow  
Bobrow

**Michael Nazarian**  
(212) 682-8771  
[mnazarian@normanbobrow.com](mailto:mnazarian@normanbobrow.com)

NORMAN BOBROW & CO. INC. 488 MADISON AVENUE 19TH FLOOR NEW YORK, NY 10022